

# FACTSHEET

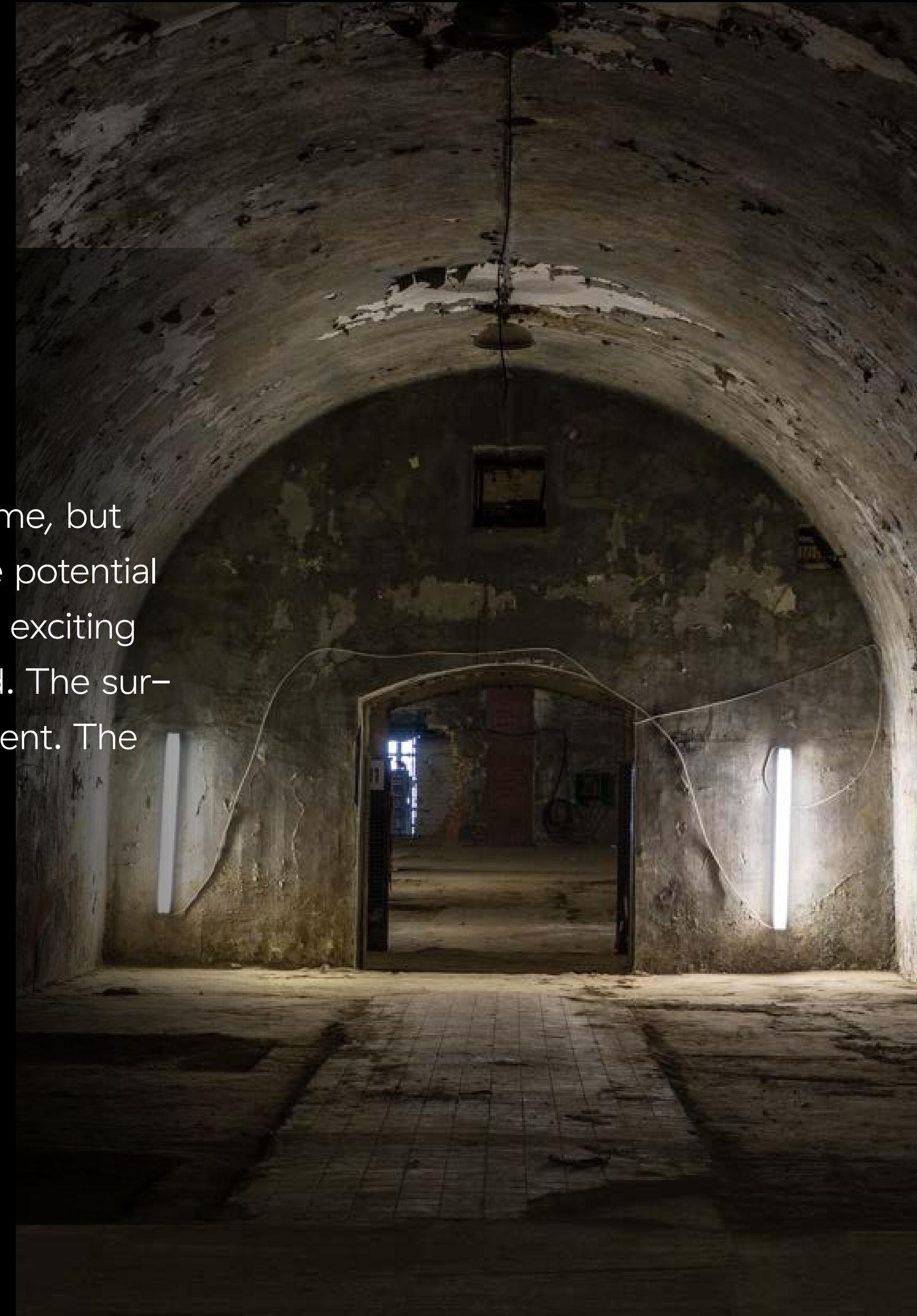
WEINKELLER

IN THE BÖHMISCHEN BRAUHAUS

*plus.*



The vault extends in the middle of the heart of Berlin Bohemian brewery. It's been brewing here for a long time, but the historic brewery vaults already show their immense potential as a creative open space. At around 3000m<sup>2</sup> and in an exciting and impressive setting. Here concepts can be animated. The surfaces are very generous and therefore fit almost any event. The vaults are different and unique in their own way.



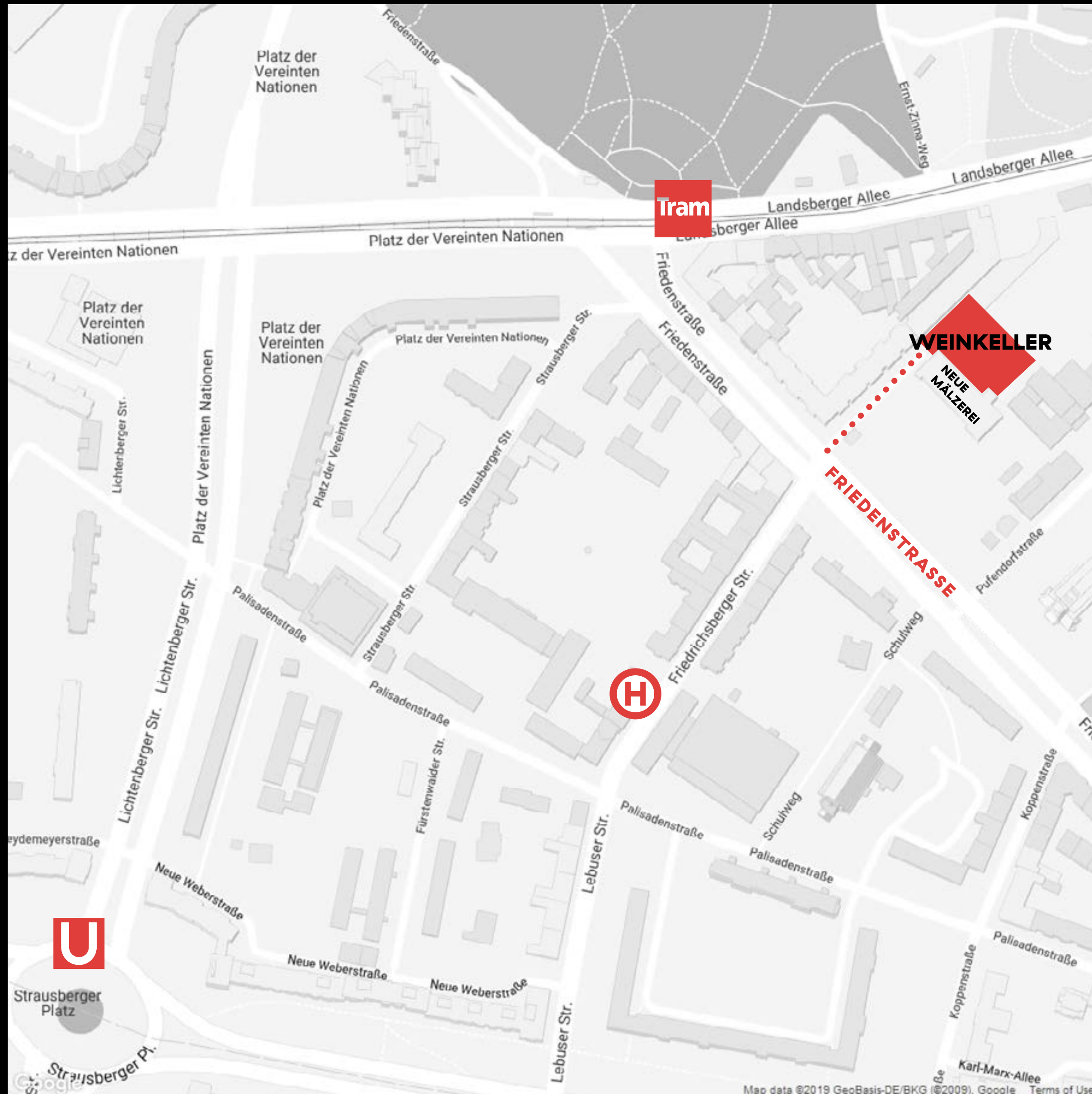


The approximately 3000 m<sup>2</sup> large Weinkeller extends through generous floor plan, interesting architecture and flexible usability. There are 16 vaults and one is about 150 to 300 m<sup>2</sup> in size.





## WEINKELLER / CONNECTION



U5 to Strausberger Platz,  
Exit Lebuser Straße  
5 Min. footpath



M5, M6 and M8 bis Platz der Vereinten Nationen  
5 Min. footpath



142 from Hauptbahnhof/Ostbahnhof  
to Friedrichsbergerstr.  
2 Min. footpath

# LOCATION

GROUND PLAN & ROOM OVERVIEW



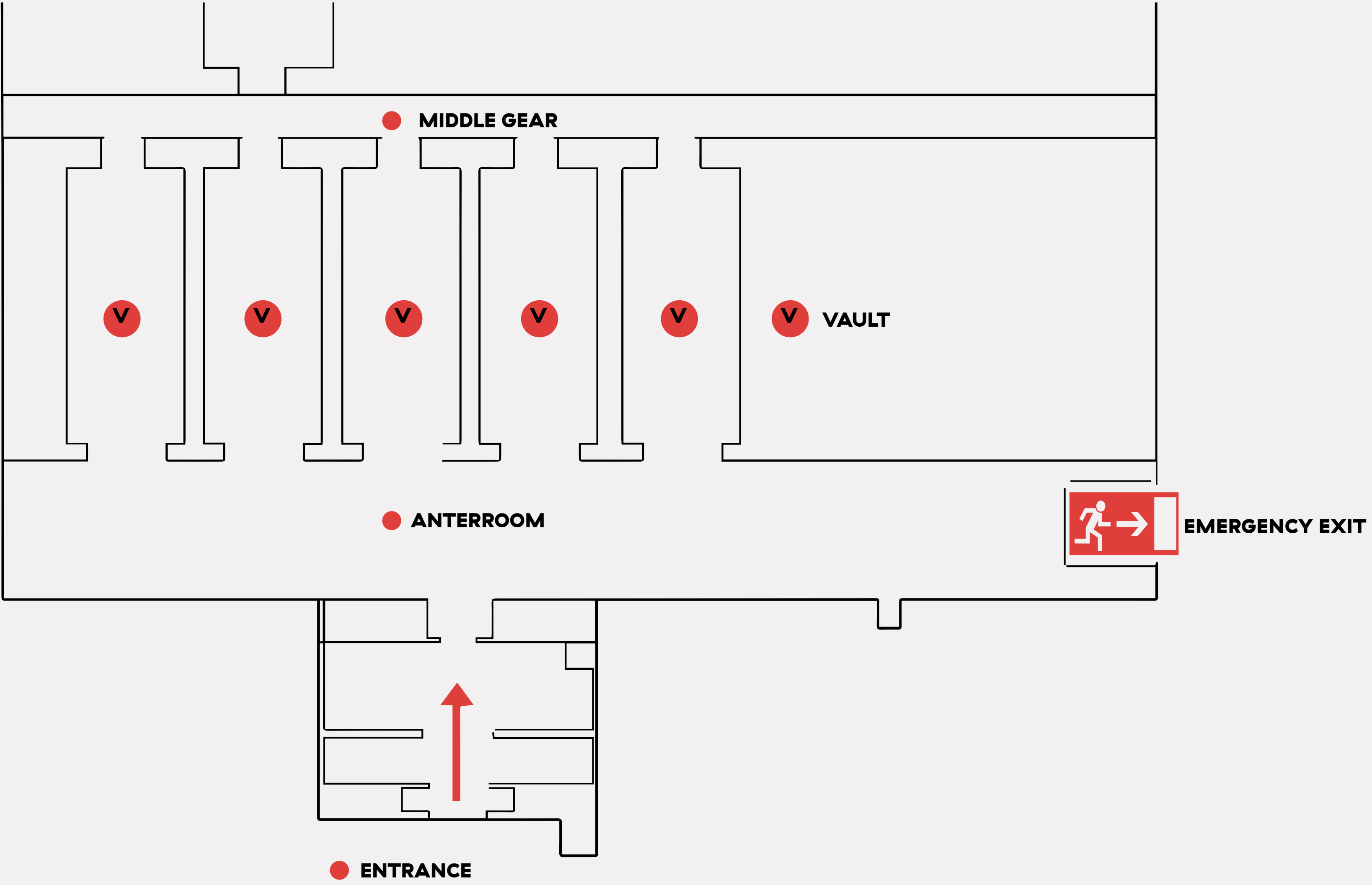
# A | WEINKELLER GROUND PLAN



- + 16 vault
- + Vault size approx. 100 up to 300 m<sup>2</sup>  
max. 200 Person
- + Total size approx. 3000 m<sup>2</sup>







# GLUT REFERENCES





**GLUT Berlin** is an agency for design, event and digital media. We offer you a professional network Consultants, strategists, planners, designers, designers, Technicians and developers. Individually for each project we put together teams whose bundled competence offers you the entire range of services of a professional brand project communication.

**GLUT Berlin** stands for individual concepts, innovative designs, effective communication measures and a detailed cost-effective planning and realization of your projects.





# GLUT REFERENCES

## WHAT?! PROPTECH DINNER

**customer** JOIN CAPITAL

**project type** WHAT?! PROPTech Dinner

**location** Weinkeller in the former  
Bohmischen Brauhaus

+ Plan planning

+ Creation

+ Projekt Managment

+ Event naming

+ Implementation

+ Decoration construction

+ Event Corporate design

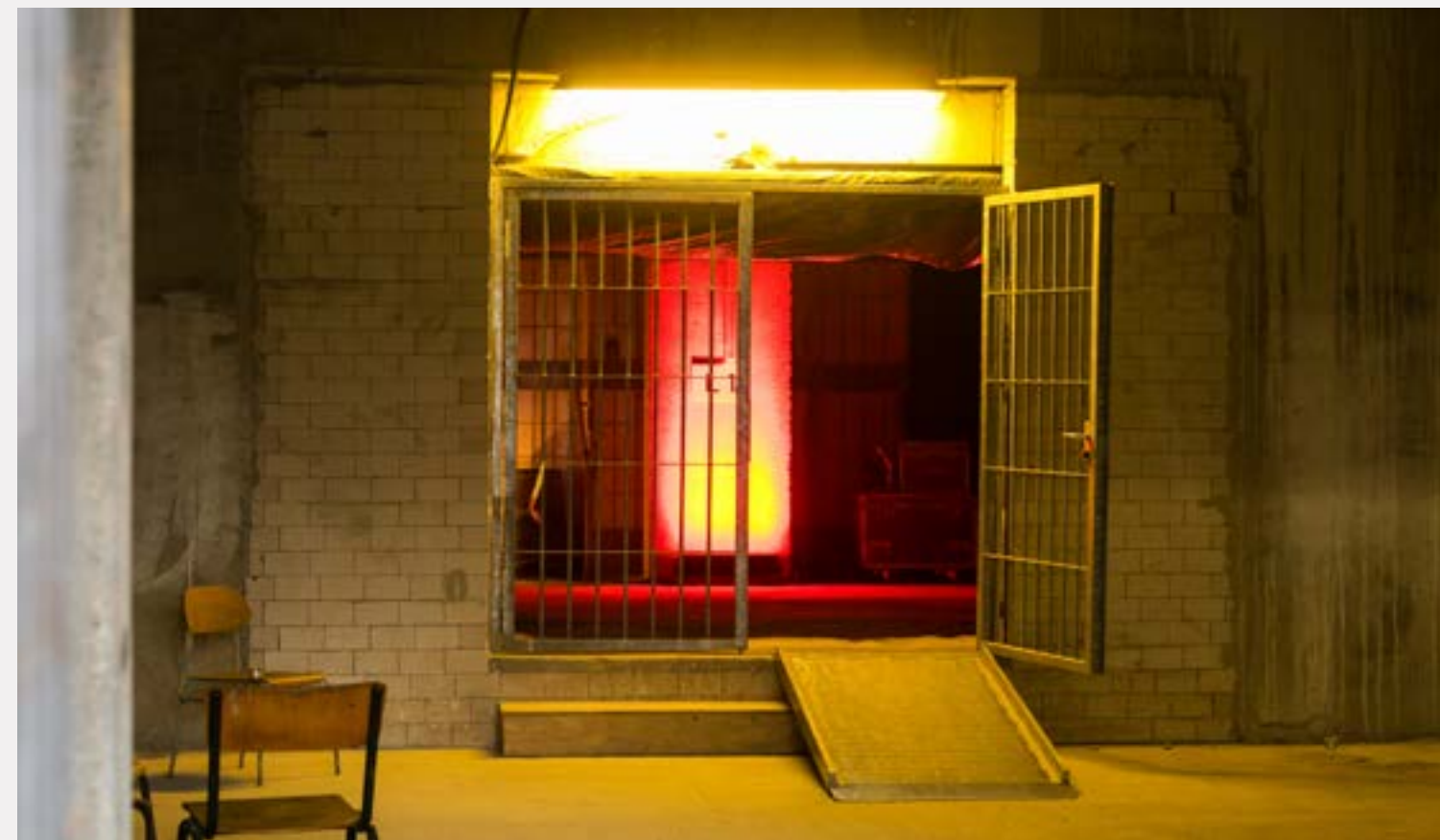
+ Event Production

+ Sound & Technology

+ Bar service & Catering

+ Intake Managment

+ Documentation







## GLUT REFERENCES

WHAT?! PROPTech DINNER







# GLUT REFERENCES

## CHERRY VENTURES PORTFOLIO DAY 2018

**customer** Openers

**project type** Conference and Dinner

**location** SEZ

+ Project Managment

+ Production Manager

+ Plan planning

+ Implementation

+ Sound & Technology

+ Documentation

+ Bar Service

+ Catering

+ Decoration construction

+ Intake Managment







# GLUT REFERENCES

## TOP MANAGER CONFERENZ AND DINNER

**customer** Porsche

**project type** Top Manager Conferenz and Dinner

**location** The Shelf

+ Project Managment

+ Catering

+ Car Service

+ Production Manager

+ Plan planning

+ Implementation

+ Sound & Technik

+ Intake Managment

+ Decoration Construction





THANKS.



## COORDINATION / CONTACT PERSON



MICHEL GEHRING  
Managing Director / Producer  
Creative Director

Fon: +49 (0) 30. 209 16 46 -10  
mg@glut.berlin



KESHIA LUNA BIEDERMANN  
Concept Creation  
Project Manager  
Social Media

Fon: +49 (0) 30. 209 16 46 -11  
klb@glut.berlin



CARLA DE OLIVEIRA  
Event Assistant  
Visual Merchandising  
Social Media

Fon: +49 (0) 30. 209 16 46 -17  
cdo@glut.berlin



GLUT Berlin  
UG + Co. KG  
Königsstadt-Brauerei house F  
Straßburger Str. 55  
10405 Berlin

Managing Director:  
Michel Gehring

phone +49.(0)30.209 16 46-0  
Fax +49.(0)30.209 16 46-29  
mail@glut.berlin  
www.glut.berlin

© Factsheetstand from 20.11.2019  
All content and ideas in this concept are the property of glut berlin. Reproduction, transmission or publication of the self-representation is not permitted without consultation with the owner.